

MVAS – Motor Vehicle Activated Sign
Monthly Report
September 2023

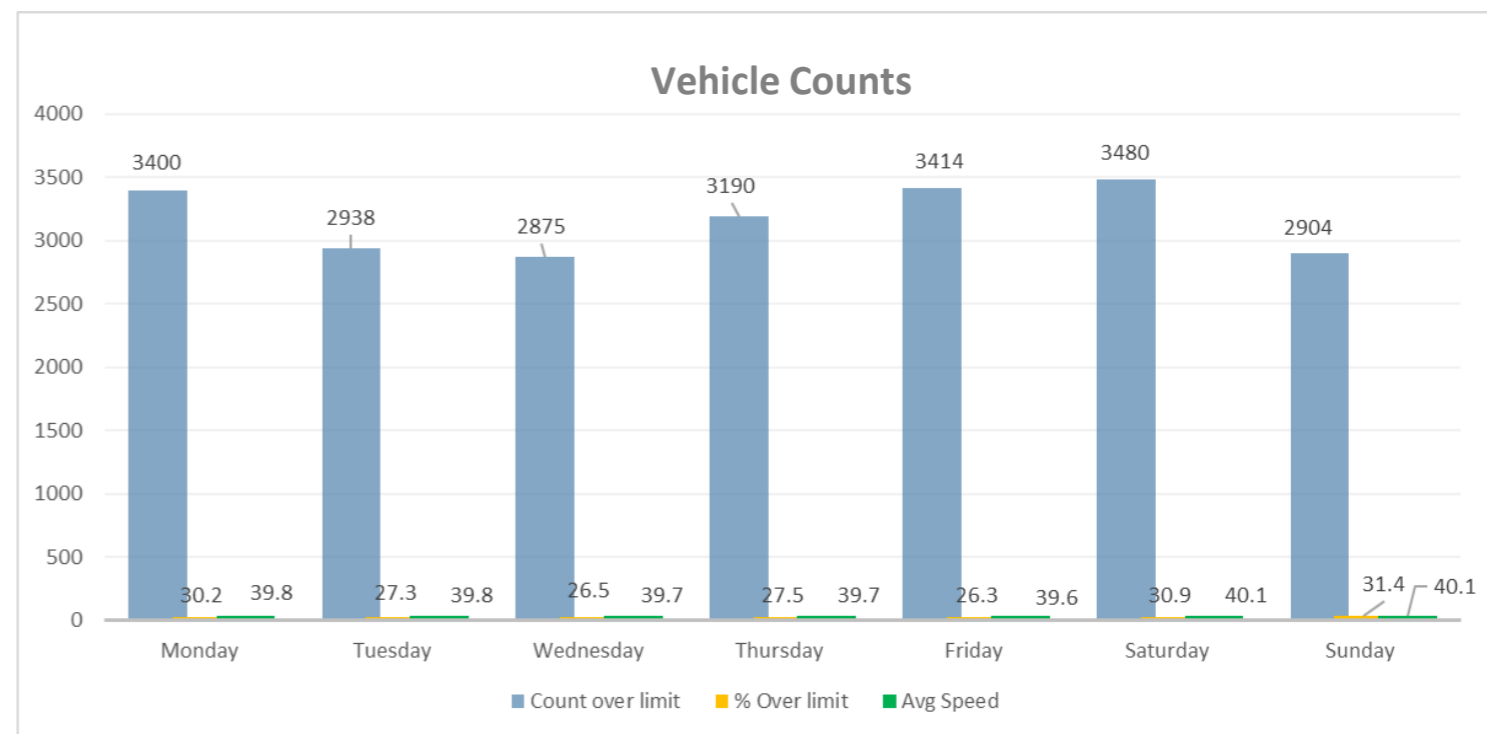
Project Location: Dropmore Road – Poyle Lane (Post 1)

Dates: 01st September 2023 @ 12:00:00 - 25th September 2023 @ 14:59:59

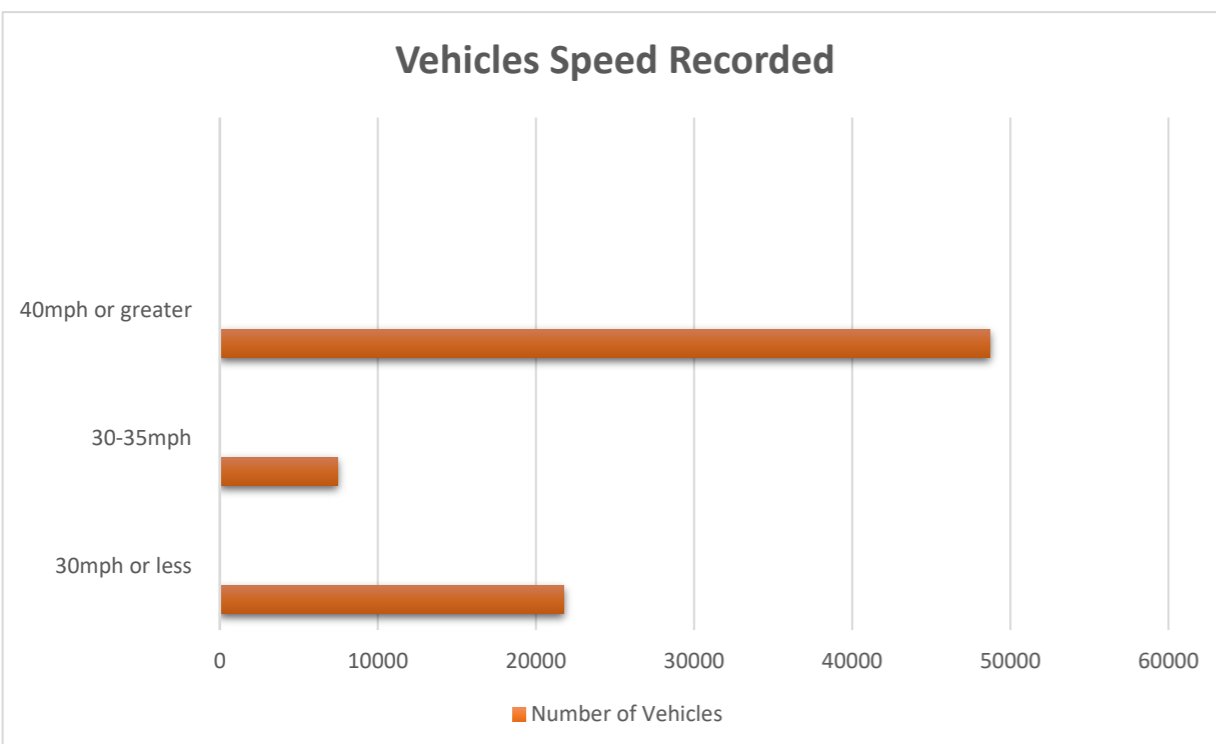
Direction: Opposite Poyle Lane turning



	Monday	Tuesday	Wednesday	Thursday	Friday	Saturday	Sunday
Count over limit	3400	2938	2875	3190	3414	3480	2904
% over limit	30.2	27.3	26.5	27.5	26.3	30.9	31.4
Average Speeder	39.8	39.8	39.7	39.7	39.6	40.1	40.1



Traffic Report	
Total Vehicles	77,975
Max Speed	80mph on 3rd September 2023 at 00:25:00
AADT (Annual Average Daily Traffic)	3232
Average Speed	30.76



Volumes - weekly vehicle counts	Time	5 Day	7 Day
Average Daily		3427	3180
AM Peak	08:00	343	272
PM Peak	17:00	350	304

Randomly selected dates for comparison

Sunday 3rd of September 2023

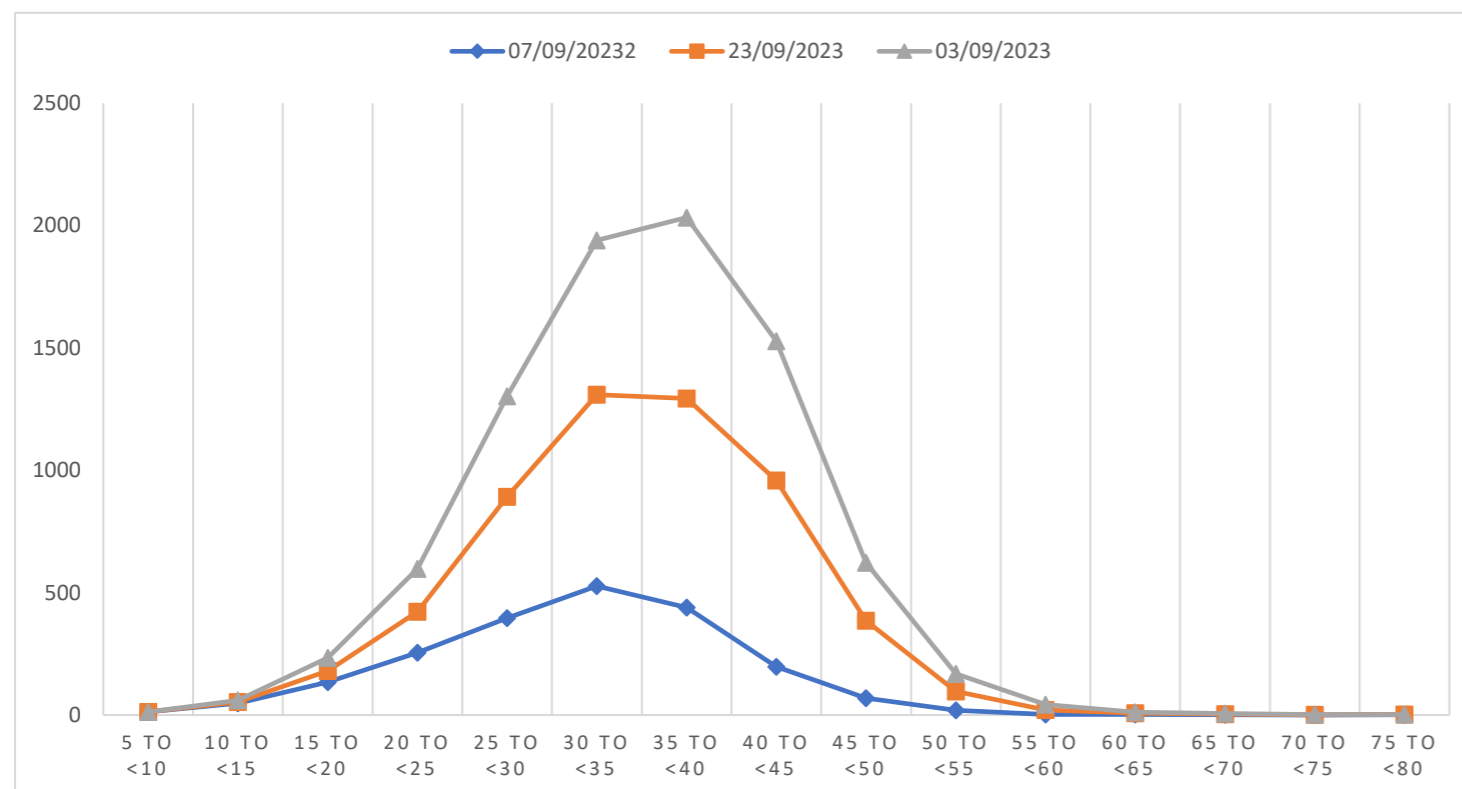
5 to <10	10 to <15	15 to <20	20 to <25	25 to <30	30 to <35	35 to <40	40 to <45	45 to <50	50 to <55	55 to <60	60 to <65	65 to <70	70 to <75	75 to <80
13	48	134	255	396	527	439	198	69	19	3	3	1	0	1

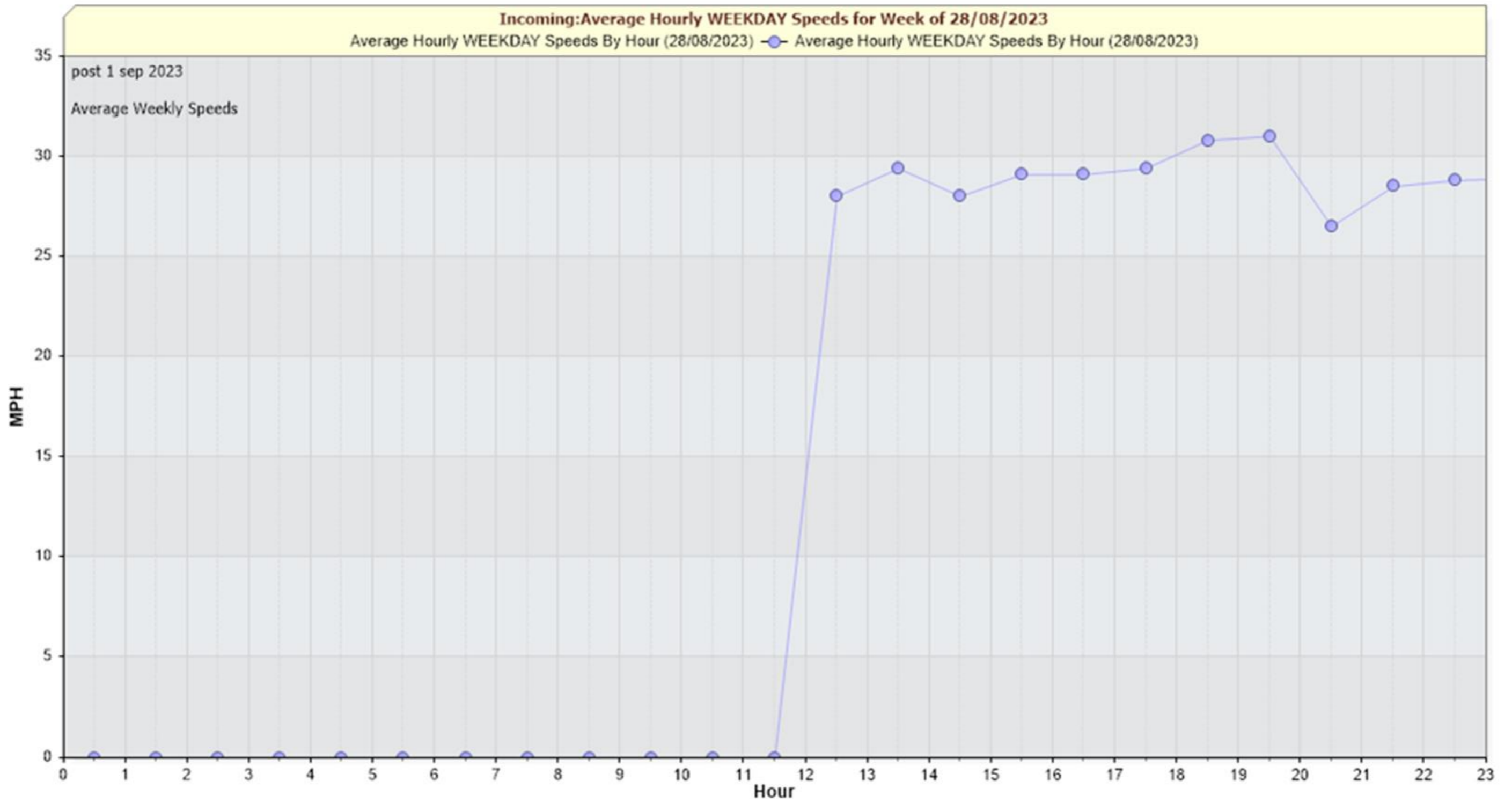
Thursday 7th of September 2023

5 to <10	10 to <15	15 to <20	20 to <25	25 to <30	30 to <35	35 to <40	40 to <45	45 to <50	50 to <55	55 to <60	60 to <65	65 to <70	70 to <75	75 to <80
0	5	47	168	496	782	854	760	317	78	18	5	3	1	1

Saturday 23rd of September 2023

5 to <10	10 to <15	15 to <20	20 to <25	25 to <30	30 to <35	35 to <40	40 to <45	45 to <50	50 to <55	55 to <60	60 to <65	65 to <70	70 to <75	75 to <80
0	7	53	175	411	631	740	569	236	71	22	4	2	1	0





The graph represents the incoming average hourly weekday speeds, plotted by hour.



Project Location: Conway Road- (Post 3)

Dates: 01st September 2023 @ 14:00:00 - 28th September 2023 @ 10:59:59

Direction: Grass verge outside No 30

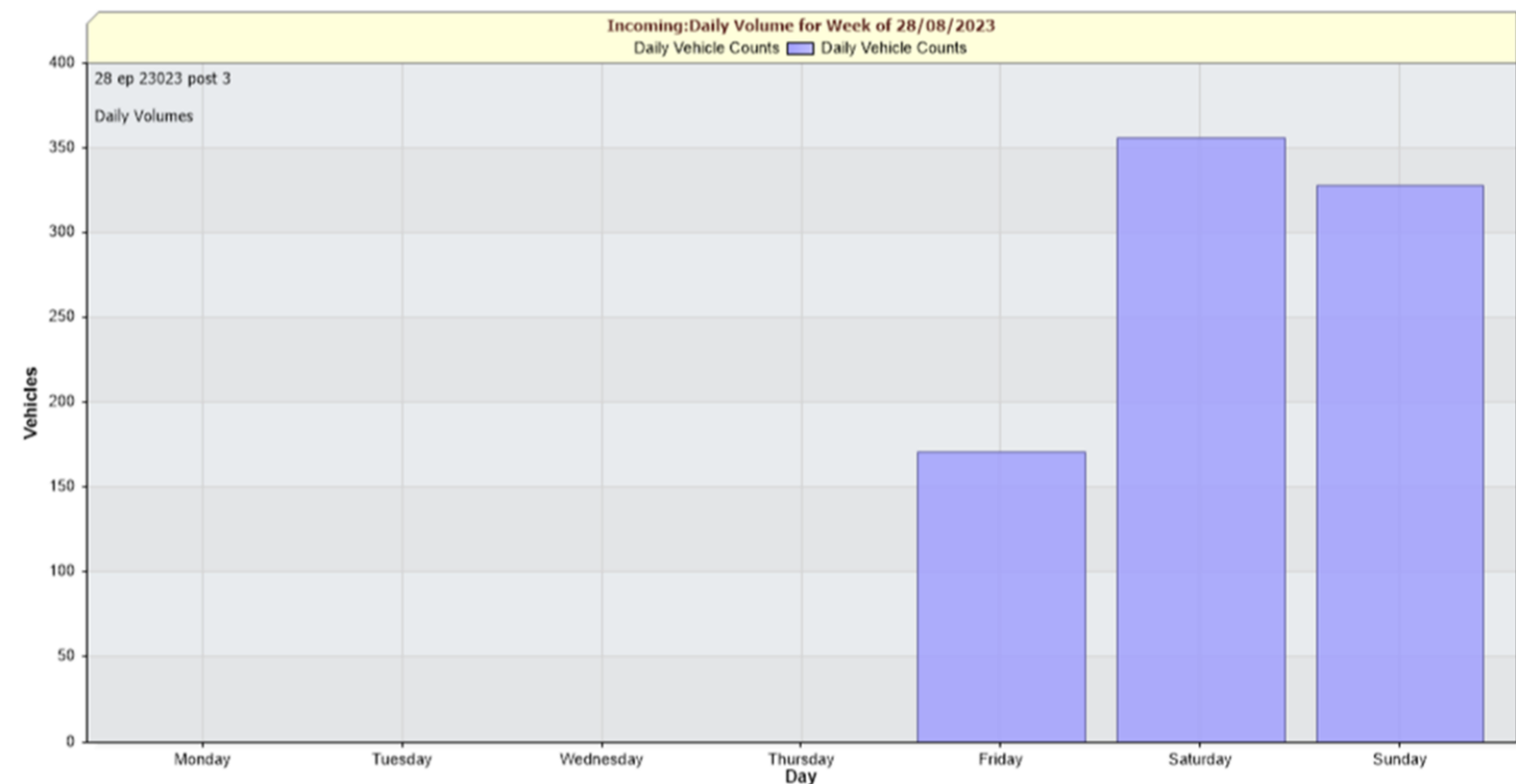
	Monday	Tuesday	Wednesday	Thursday	Friday	Saturday	Sunday
Count over limit	0	0	0	0	0	0	0
% over limit	0.0	0.0	0.0	0.0	0.0	0.0	0.0
Average Speeder	NaN	NaN	NaN	NaN	NaN	NaN	NaN

Traffic Report	
Total Vehicles	8907
Max Speed	35mph on 1 st September 2023 at 22:55:00
AADT (Annual Average Daily Traffic)	331
Average Speed	20.86mph

Volumes - weekly vehicle counts	Time	5 Day	7 Day
Average Daily		321	317
AM Peak	08:00	47	35
PM Peak	15:00	39	34



No data available to show the total number of violators, vehicles and average speed (mph)



Randomly selected dates for comparison

Friday 8th September 2023

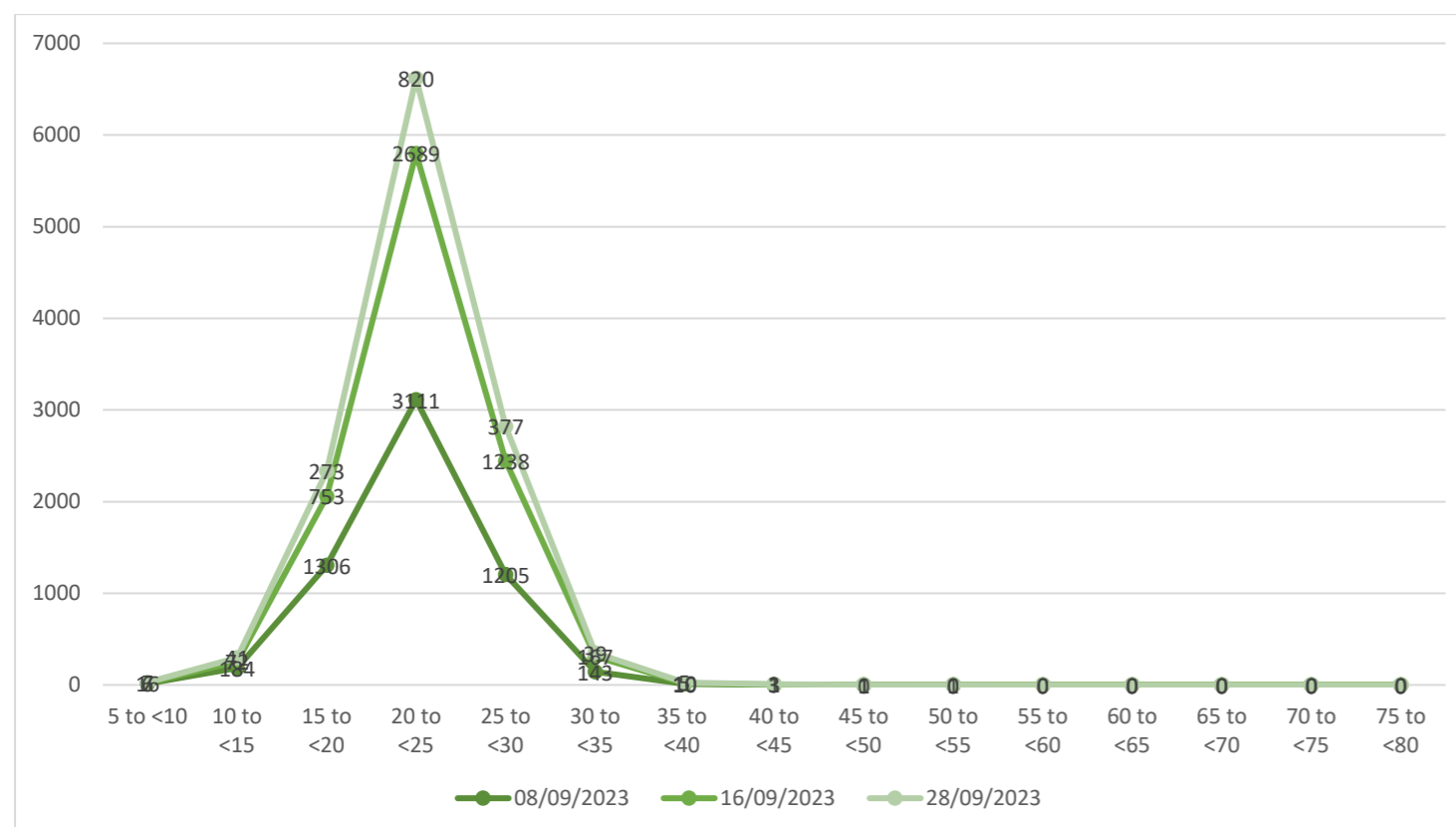
5 to <10	10 to <15	15 to <20	20 to <25	25 to <30	30 to <35	35 to <40	40 to <45	45 to <50	50 to <55	55 to <60	60 to <65	65 to <70	70 to <75	75 to <80
16	184	1306	3111	1205	143	10	3	0	1	0	0	0	0	0

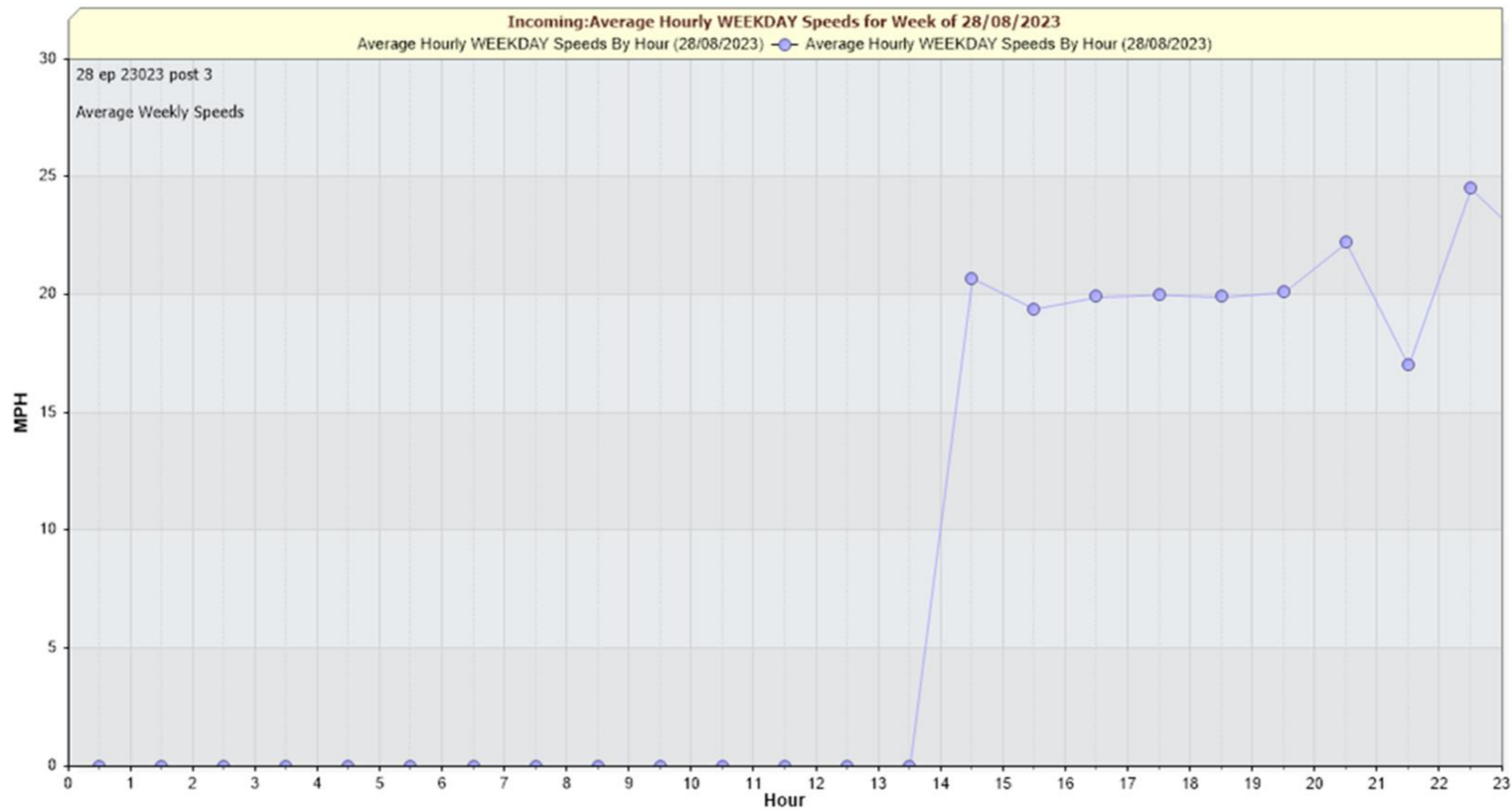
Saturday 16th September 2023

5 to <10	10 to <15	15 to <20	20 to <25	25 to <30	30 to <35	35 to <40	40 to <45	45 to <50	50 to <55	55 to <60	60 to <65	65 to <70	70 to <75	75 to <80
6	72	753	2689	1238	167	10	3	1	0	0	0	0	0	0

Thursday 28th September 2023

5 to <10	10 to <15	15 to <20	20 to <25	25 to <30	30 to <35	35 to <40	40 to <45	45 to <50	50 to <55	55 to <60	60 to <65	65 to <70	70 to <75	75 to <80
7	41	273	820	377	39	5	1	1	0	0	0	0	0	0







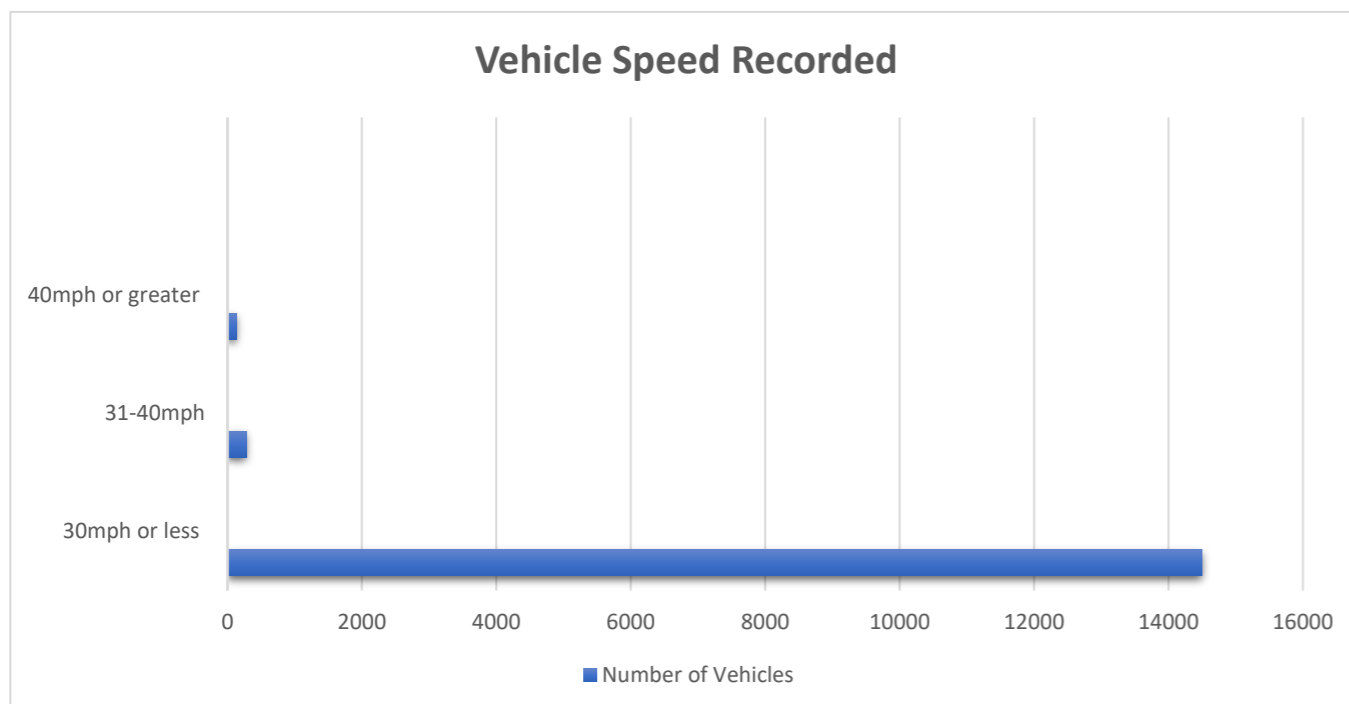
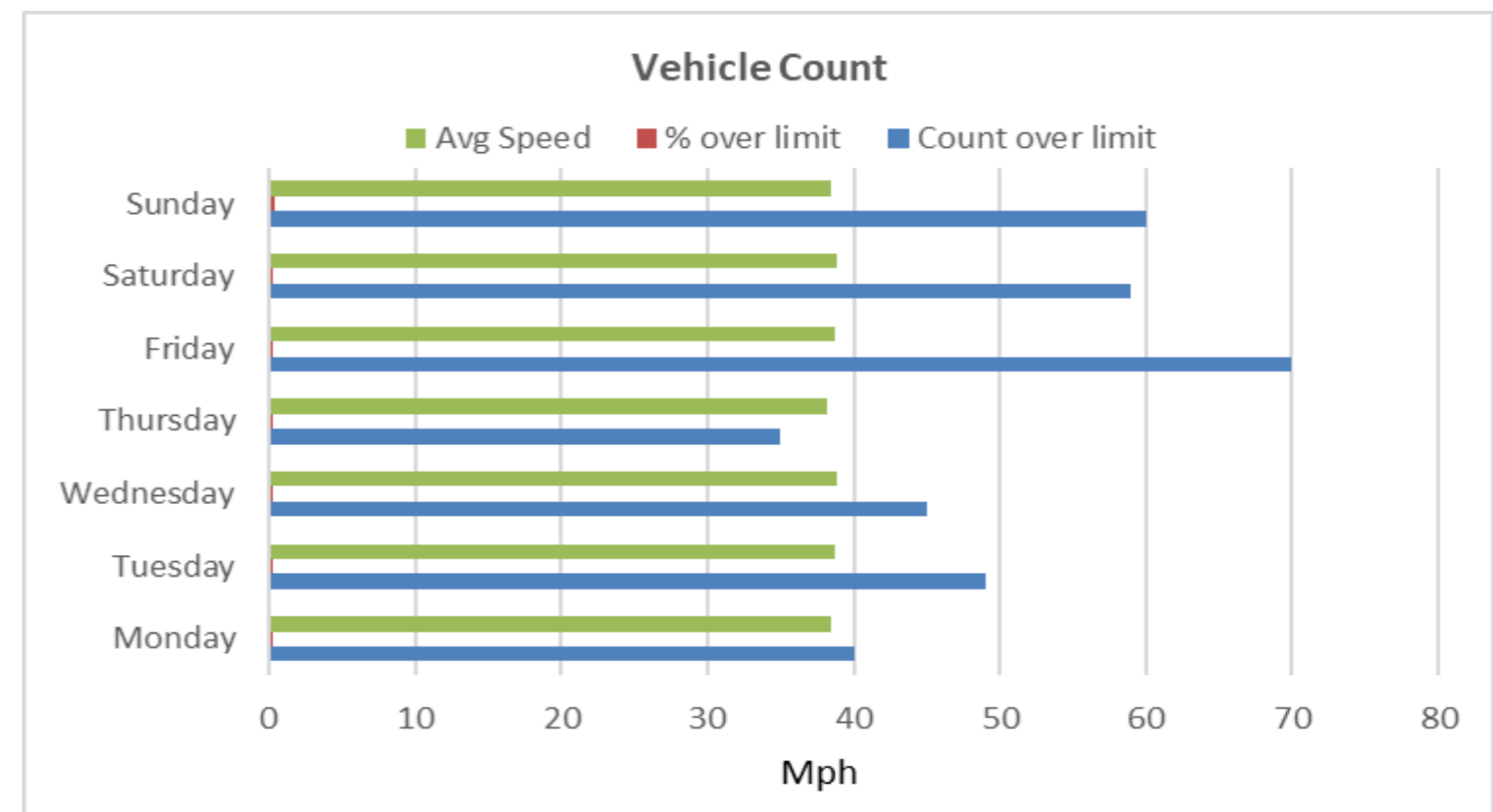
Project Location: Britwell Road (Post 4)

Dates: 01st September 2023 @ 13:00:00 - 28th September 2023 @ 10:59:59

Direction: Next to planters opposite No 32

	Monday	Tuesday	Wednesday	Thursday	Friday	Saturday	Sunday
Count over limit	40	49	45	35	70	59	60
% over limit	0.2	0.2	0.2	0.2	0.3	0.3	0.4
Average Speeder	38.5	38.7	38.8	38.2	38.7	38.9	38.5

Traffic Report	
Total Vehicles	145892
Max Speed	55mph on 4th September 2023 at 19:20:00
AADT (Annual Average Daily Traffic)	5420
Average Speed	22.7



Volumes - weekly vehicle counts	Time	5 Day	7 Day
Average Dail		5553	5210
AM Peak	08:00	533	431
PM Peak	17:00	492	437

Randomly selected dates for comparison

Sunday 3rd of September 2023

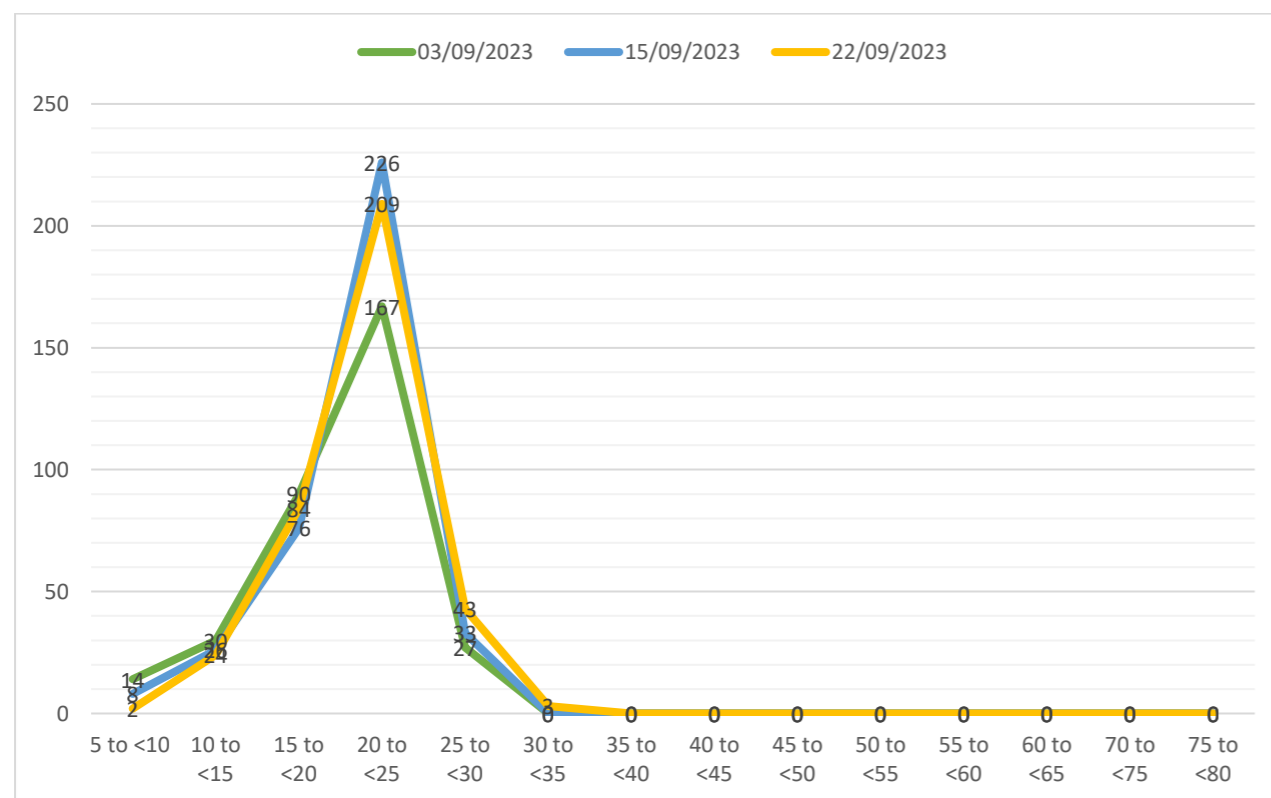
5 to <10	10 to <15	15 to <20	20 to <25	25 to <30	30 to <35	35 to <40	40 to <45	45 to <50	50 to <55	55 to <60	60 to <65	65 to <70	70 to <75	75 to <80
14	30	90	167	27	0	0	0	0	0	0	0	0	0	0

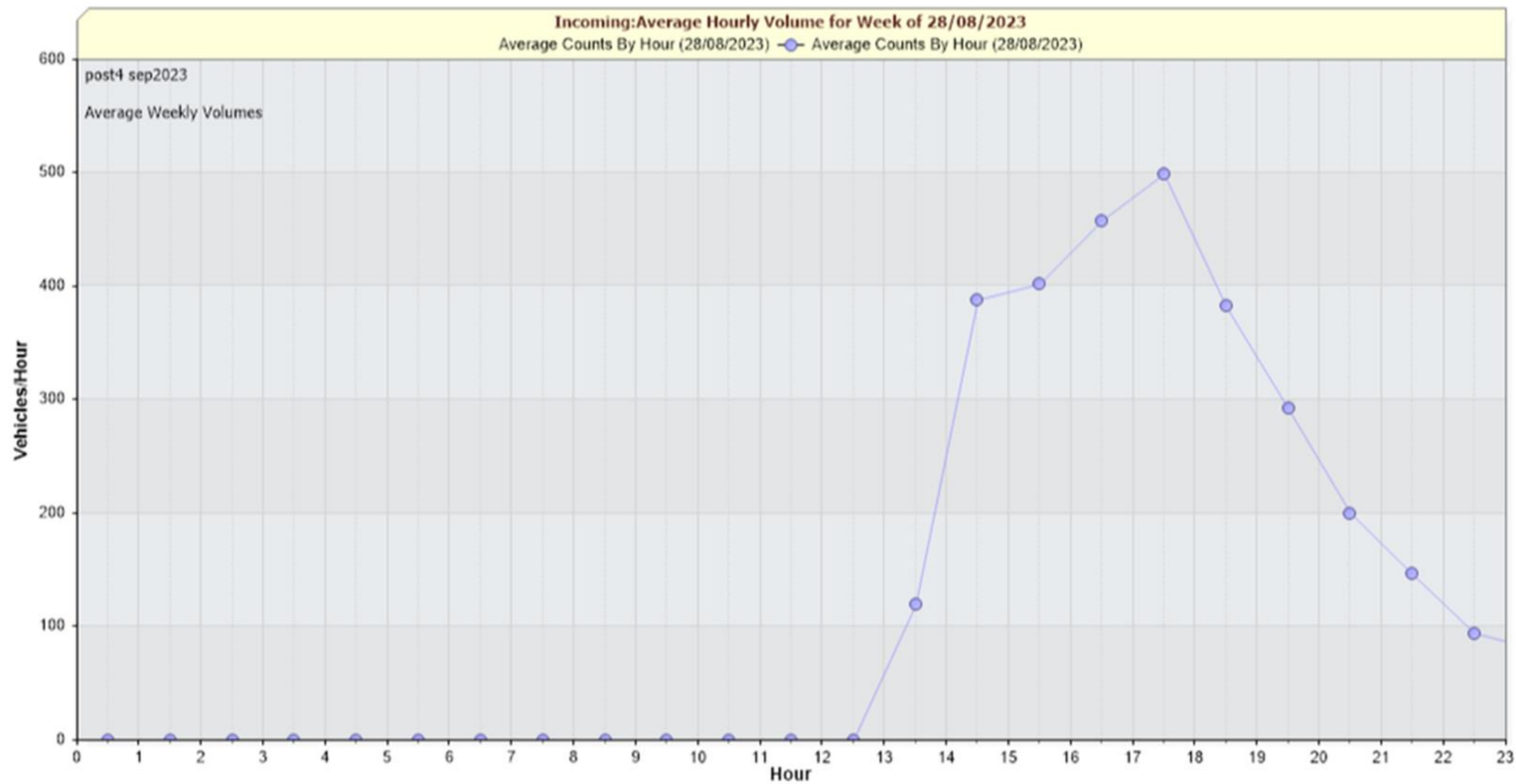
Friday 15th September 2023

5 to <10	10 to <15	15 to <20	20 to <25	25 to <30	30 to <35	35 to <40	40 to <45	45 to <50	50 to <55	55 to <60	60 to <65	65 to <70	70 to <75	75 to <80
8	26	76	226	33	0	0	0	0	0	0	0	0	0	0

Friday 22nd September 2023

5 to <10	10 to <15	15 to <20	20 to <25	25 to <30	30 to <35	35 to <40	40 to <45	45 to <50	50 to <55	55 to <60	60 to <65	65 to <70	70 to <75	75 to <80
2	24	84	209	43	3	0	0	0	0	0	0	0	0	0





Glossary

<p>MVAS</p>	<ul style="list-style-type: none"> → A Movable Vehicle Activated Sign (MVAS) is a road sign usually triggered by the speed of the vehicle → The MVAS can be moved from site to site. → The MVAS will flash a speed warning for vehicles exceeding the speed limit (30mph). → It will also record data that can be used to monitor the volume of traffic during a particular period as well as on a daily basis. → More importantly it will give us information on the speeding cars (the speed they are travelling and at what time of the day). → MVAS have a short-lived effectiveness in reducing speeds, as unfortunately drivers become too familiar with them when they are situated in one particular location for long periods of time. → They can be very effective when positioned near downhill gradients reminding drivers who may be inadvertently speeding.
<p>AADT</p>	<ul style="list-style-type: none"> → Annual average daily traffic, abbreviated AADT and is a simple, but useful, measurement of how busy the road is. → Traditionally, it is the total volume of vehicle traffic of a highway or road for a year divided by 365 days.
<p><i>85th Percentile Speed (mph)</i></p>	<ul style="list-style-type: none"> → The 85th percentile speed is the speed at or below which 85 percent of the drivers travel on a road segment. → Motorists travelling above the 85th percentile speed are considered to be exceeding the safe and reasonable speed for road and traffic conditions. → The 85th percentile speed should be taken from speed data collected during a 24-hour weekday period. → Typically, the data are collected with commercially available roadside units which sort and present the results in text as well as graphical format.