

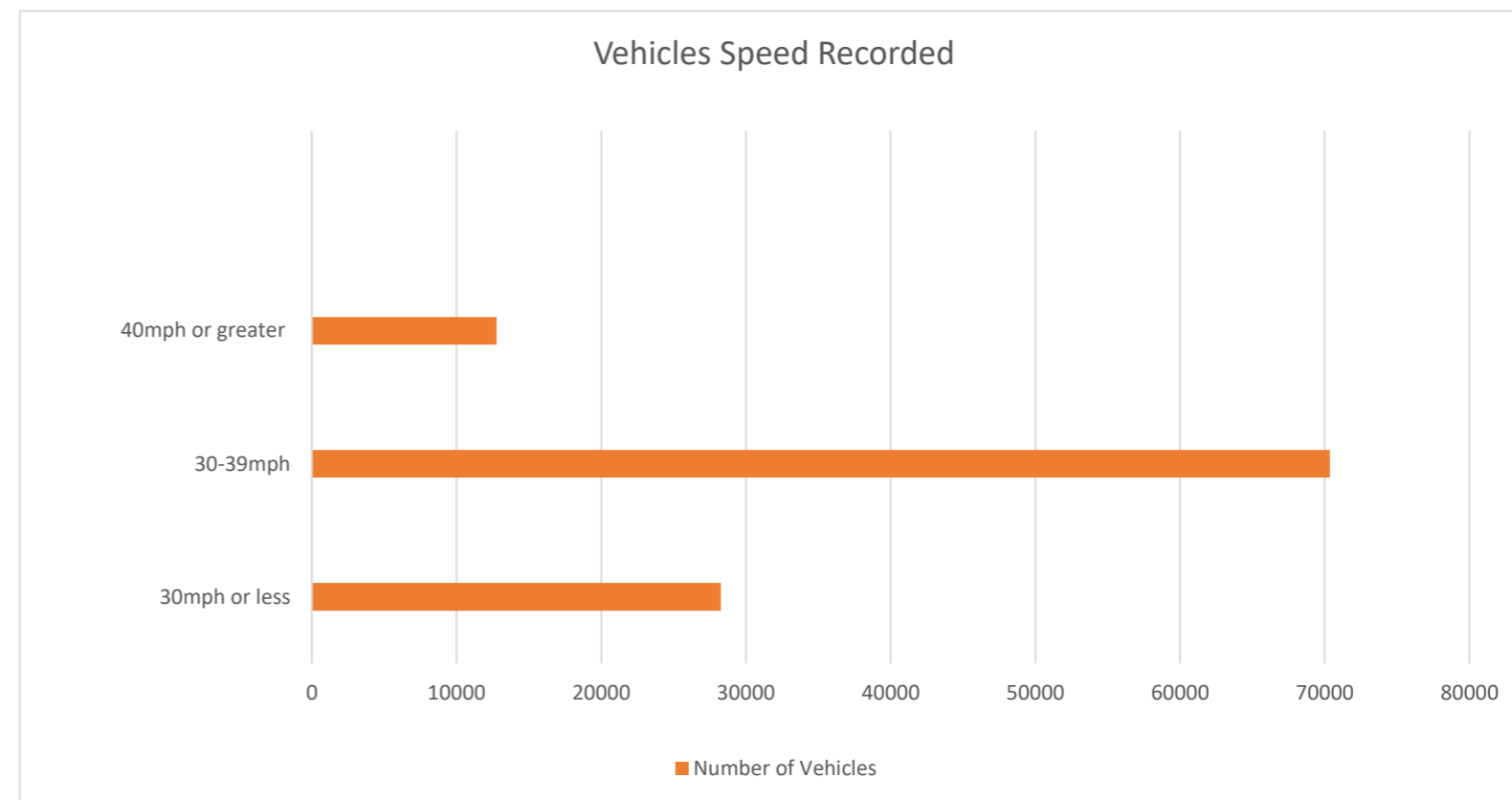
**MVAS – Motor Vehicle Activated Sign
Monthly Report
October 2023**



Project Location: Hogfair Lane (Post 6)

Dates: 28th September 2023 @ 12:00:00 – 26th October 2023 @ 12:59:59

Direction: On grass verge before school entrance



Traffic Report	
Total Vehicles	111,386
Max Speed	65mph on 21 st October 2023 at 18:00:00
AADT (Annual Average Daily Traffic)	N/A
Average Speed	N/A

Data Corrupted
No other information available for analysis

Randomly selected dates for comparison

On Thursday 5th October 2023

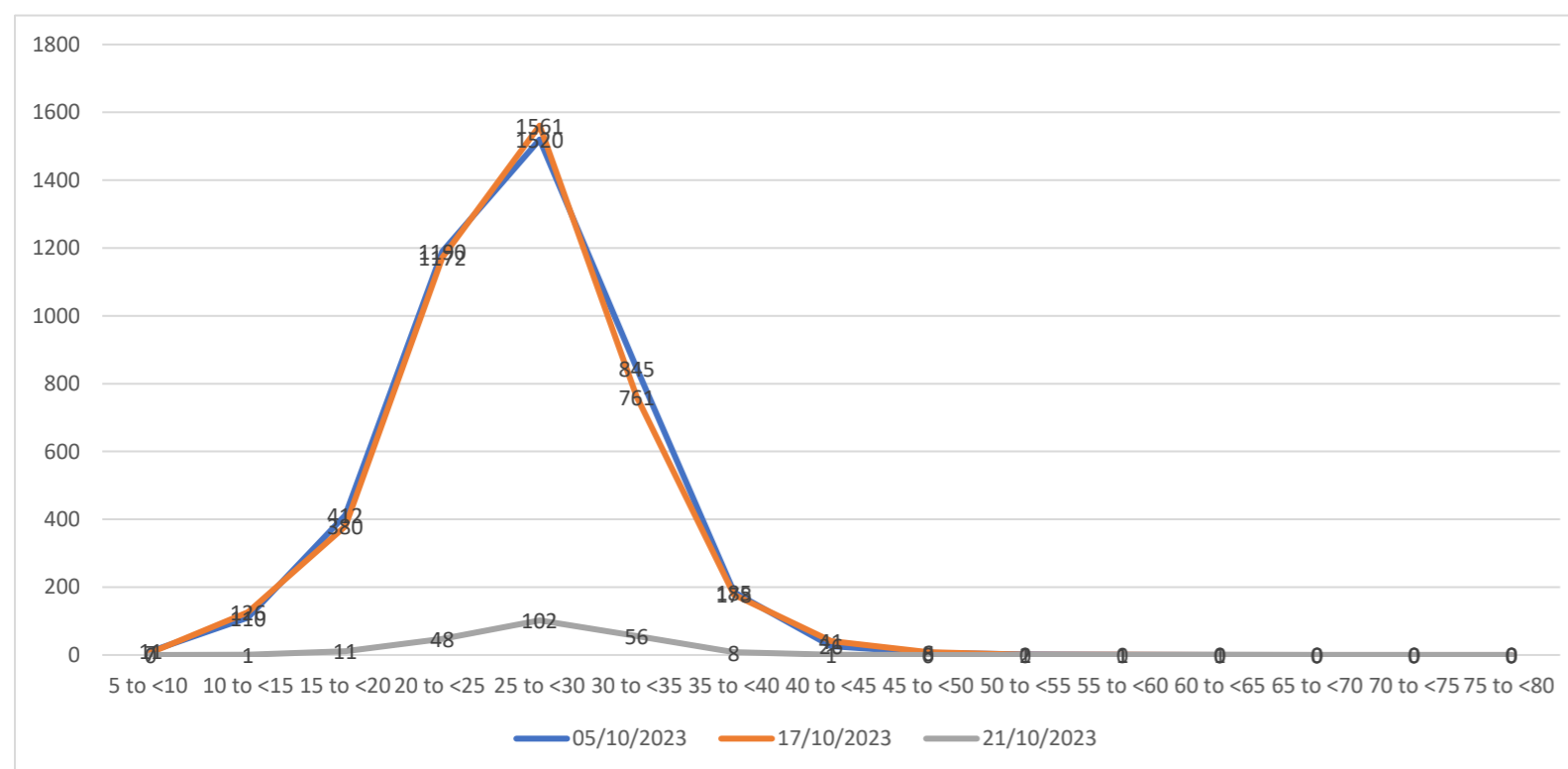
5 to <10	10 to <15	15 to <20	20 to <25	25 to <30	30 to <35	35 to <40	45 to <45	45 to <50	50 to <55	55 to <60	60 to <65	65 to <70	70 to <75	75 to <80
11	110	412	1190	1520	845	185	26	6	2	1	0	0	0	0

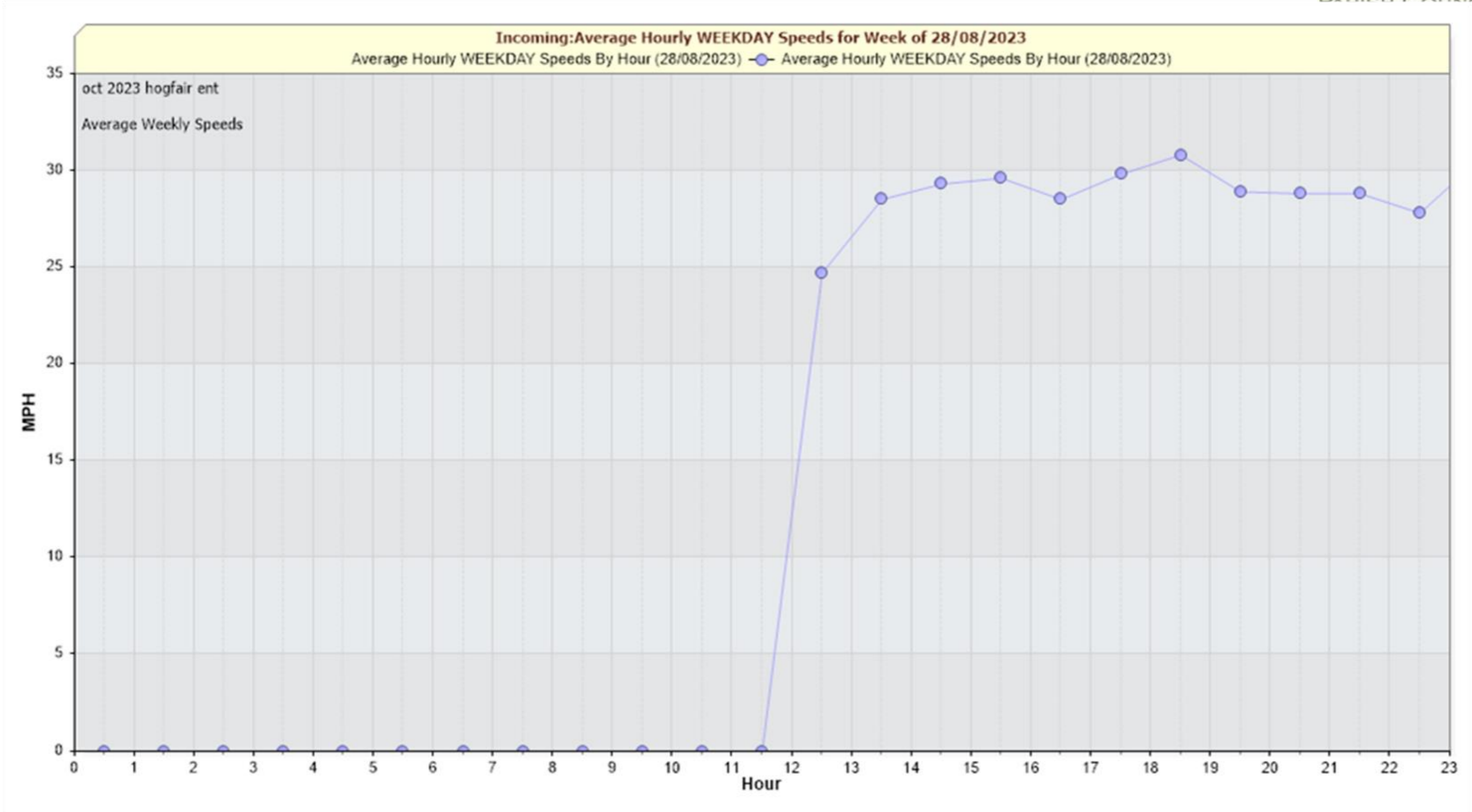
On Tuesday 17th October 2023

5 to <10	10 to <15	15 to <20	20 to <25	25 to <30	30 to <35	35 to <40	45 to <45	45 to <50	50 to <55	55 to <60	60 to <65	65 to <70	70 to <75	75 to <80
7	126	380	1172	1561	761	178	41	8	1	1	0	0	0	0

On Saturday 21st October 2023

5 to <10	10 to <15	15 to <20	20 to <25	25 to <30	30 to <35	35 to <40	45 to <45	45 to <50	50 to <55	55 to <60	60 to <65	65 to <70	70 to <75	75 to <80
0	1	11	48	102	56	8	1	0	0	0	1	0	0	0







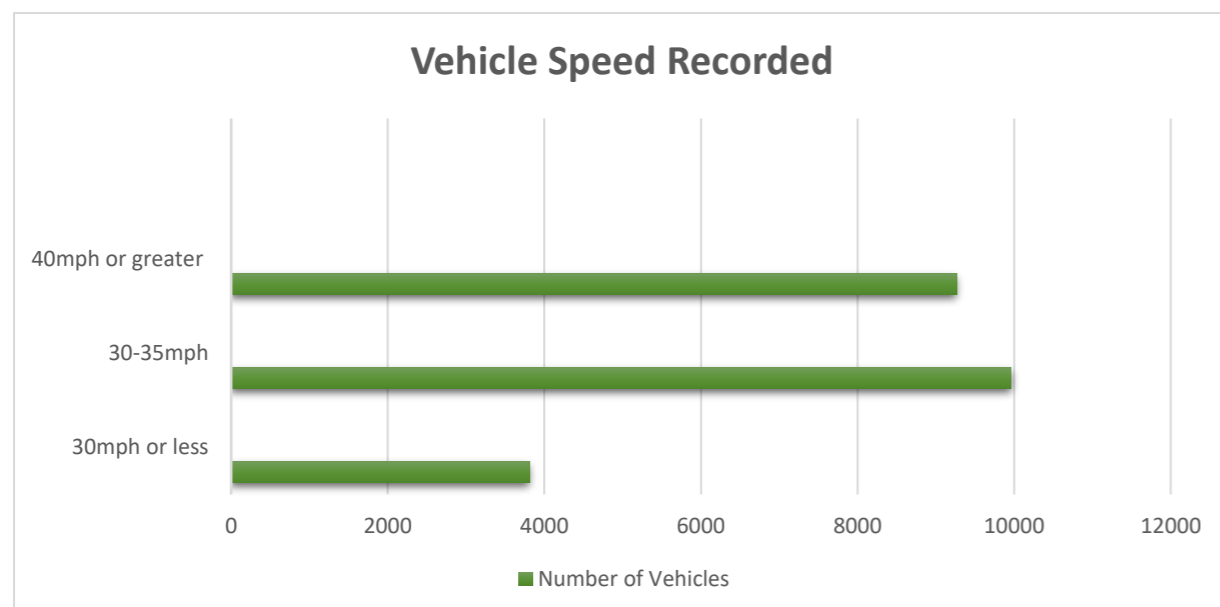
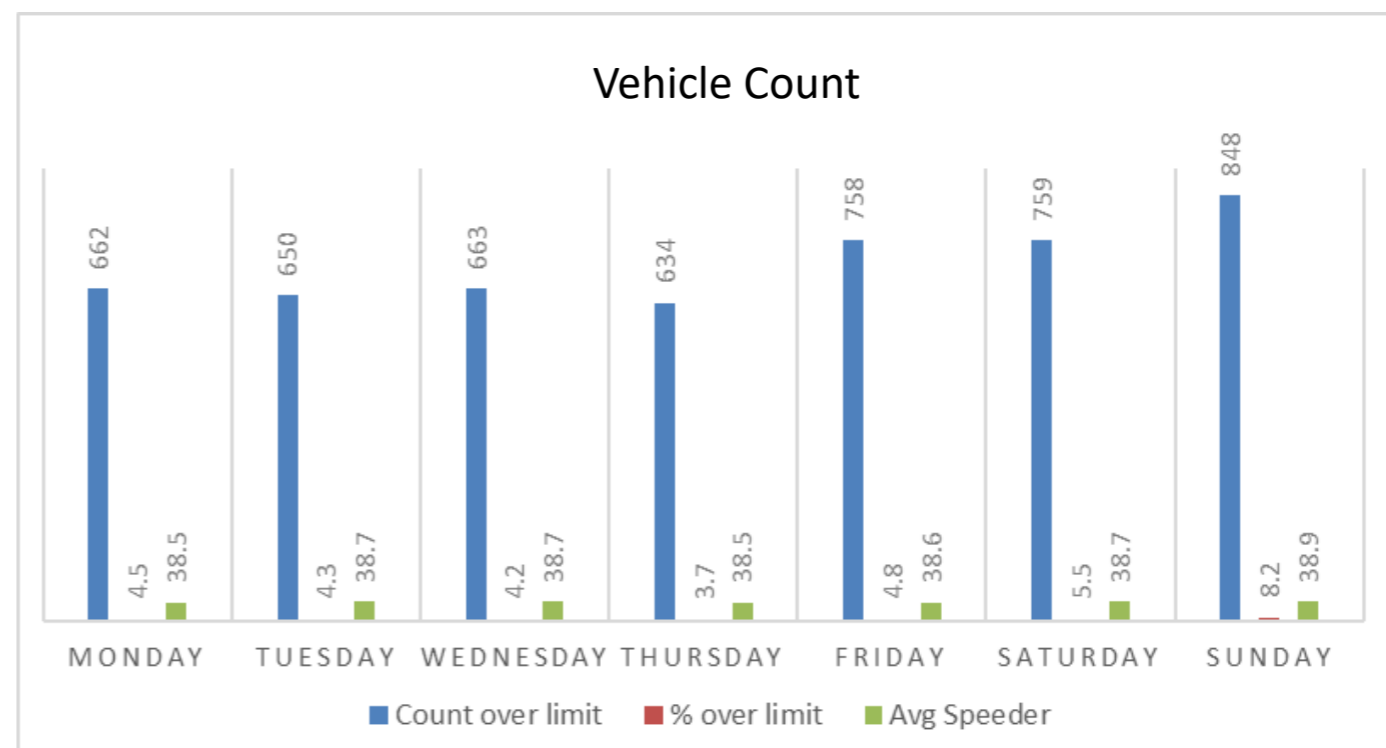
Project Location: Hogfair Exit (Post 5)

Dates: 25th September 2023 @ 15:00:00 – 26th October 2023 @ 14:59:59

Direction: On grass verge just before school exit

	Monday	Tuesday	Wednesday	Thursday	Friday	Saturday	Sunday
Count over limit	662	650	663	634	758	759	848
% over limit	4.5	4.3	4.2	3.7	4.8	5.5	8.2
Average Speeder	38.5	38.7	38.7	38.5	38.6	38.7	38.9

Traffic Report	
Total Vehicles	103037
Max Speed	65mph on 7th October 2023 at 12:30:00
AADT (Annual Average Daily Traffic)	3323
Average Speed	26.18



Volumes – Weekly Vehicle Counts	Time	5 Day	7 Day
Average Daily		3314	3230
AM Peak	07:00	280	224
PM peak	17:00	288	267

Randomly selected dates for comparison

On Saturday 7th October 2023

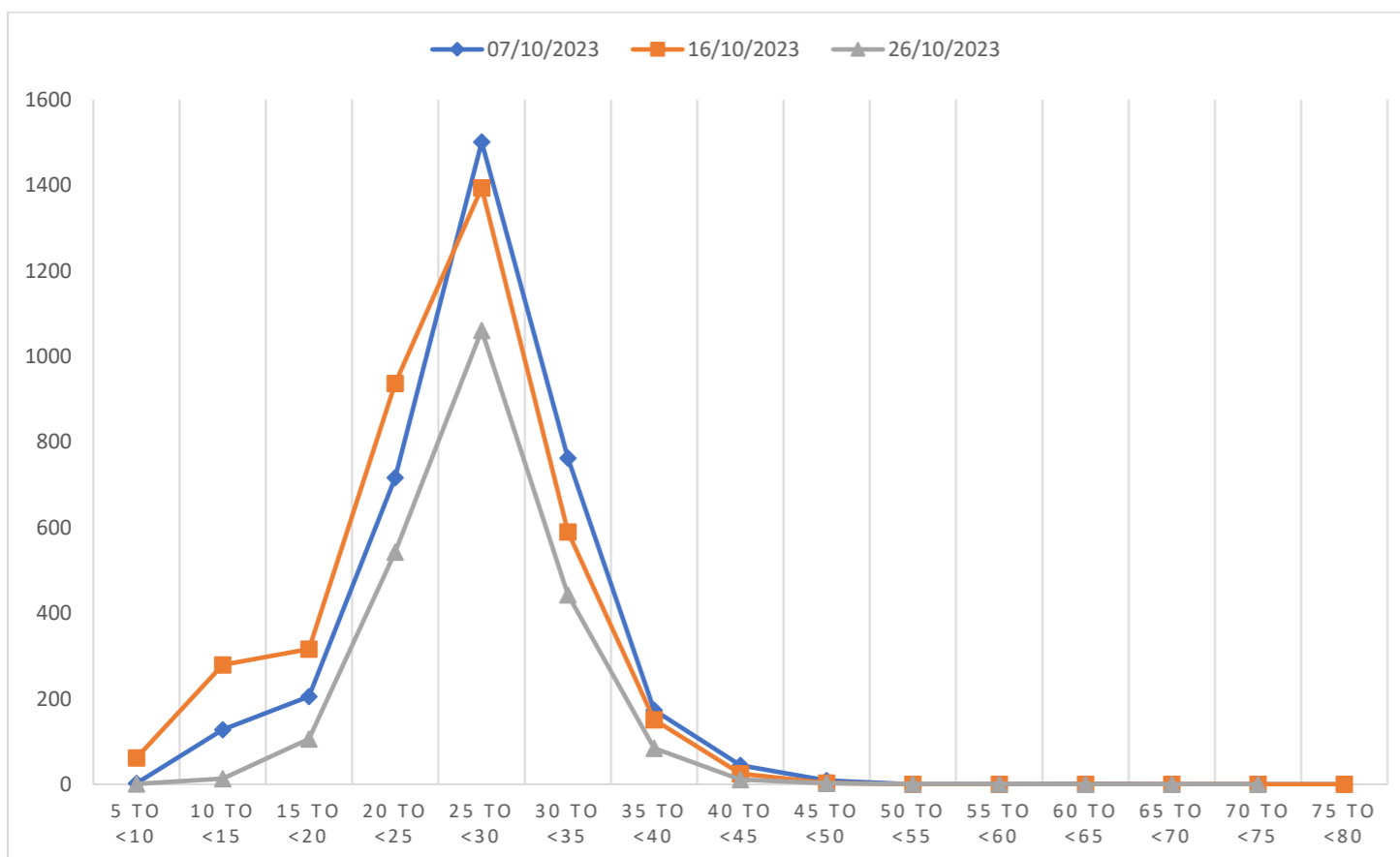
5 to < 10	10 to <15	15 to <20	20 to <25	25 to < 30	30 to <35	35 to <40	40 to <45	45 to< 50	50 to <55	55 to <60	60 to <65	65 to<70	70 to <75	75 to <80
2	128	205	717	1501	762	173	44	9	0	0	1	0	0	0

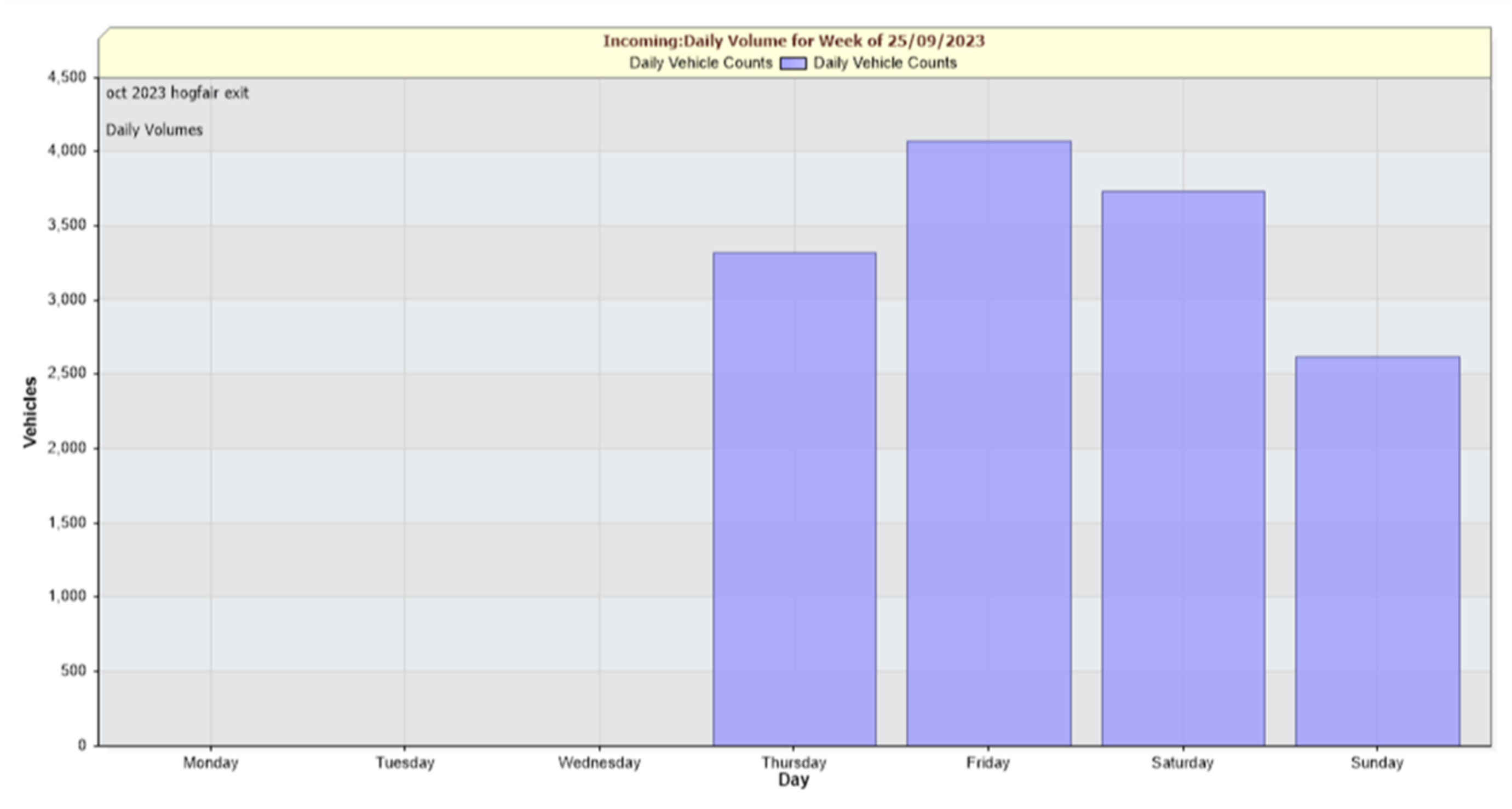
On Monday 16th October 2023

5 to < 10	10 to <15	15 to <20	20 to <25	25 to < 30	30 to <35	35 to <40	40 to <45	45 to< 50	50 to <55	55 to <60	60 to <65	65 to<70	70 to <75	75 to <80
62	279	316	937	1394	590	151	25	3	0	0	0	0	0	0

On Sunday 26th October 2023

5 to < 10	10 to <15	15 to <20	20 to <25	25 to < 30	30 to <35	35 to <40	40 to <45	45 to< 50	50 to <55	55 to <60	60 to <65	65 to<70	70 to <75	75 to <80
1	13	106	543	1061	443	84	11	2	1	1	0	0	0	0





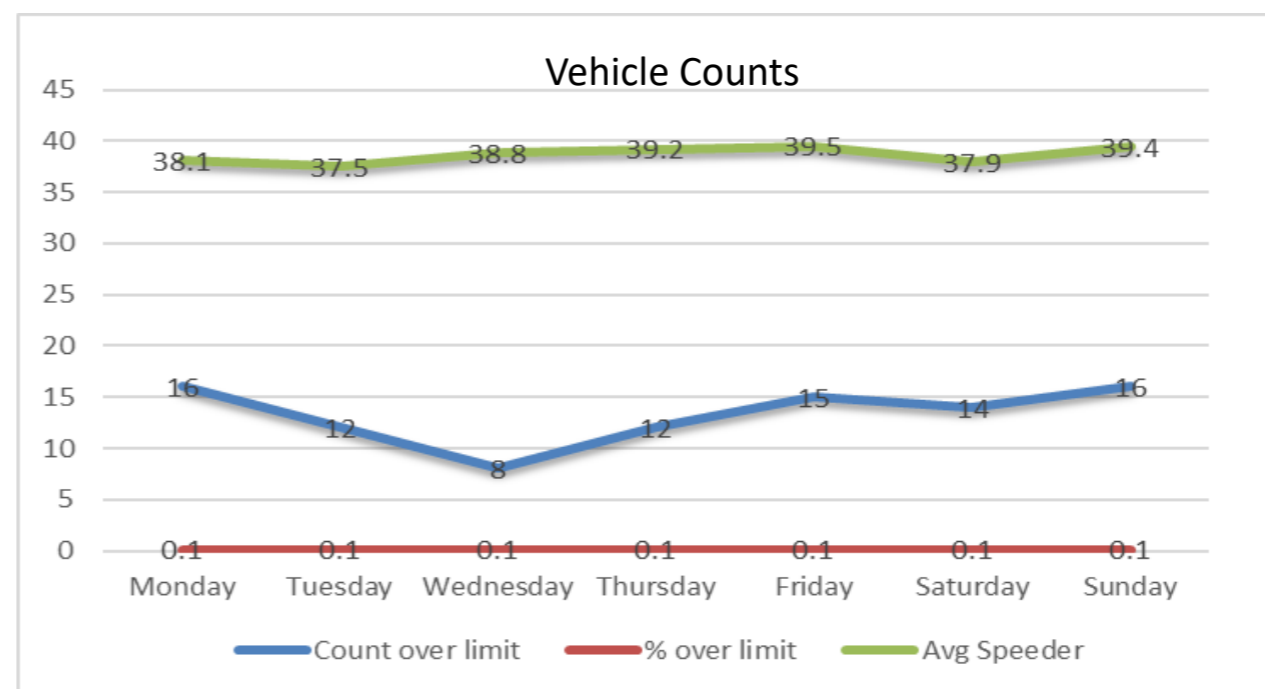


Project Location: Stomp Road (Post 7)

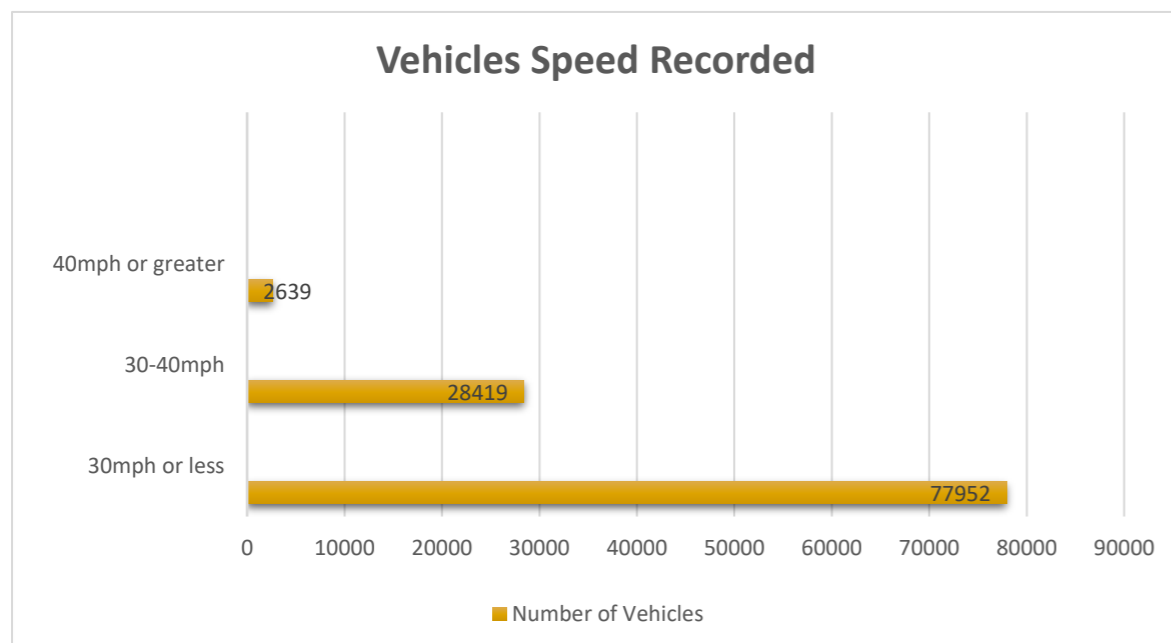
Dates: 28th September @ 11:00:00 – 26th October 2023 @ 11:59:59

Direction: On grass verge before Tennis/Bowls Club

	Monday	Tuesday	Wednesday	Thursday	Friday	Saturday	Sunday
Count over limit	16	12	8	12	15	14	16
% over limit	0.1	0.1	0.1	0.1	0.1	0.1	0.1
Average Speeder	38.1	38.8	38.8	39.2	39.5	37.9	39.4



Traffic Report	
Total Vehicles	109010
Max Speed	50mph on 1 st October 2023 at 22:00:00
AADT (Annual Average Daily Traffic)	3887
Average Speed	19.93



Volumes – Weekly Vehicle Count	Time	5 Day	7 Day
Average Daily		3804	3780
AM Peak	08:00	273	255
PM Peak	14:00	300	285



Randomly selected dates for comparison

On Sunday 1st October 2023

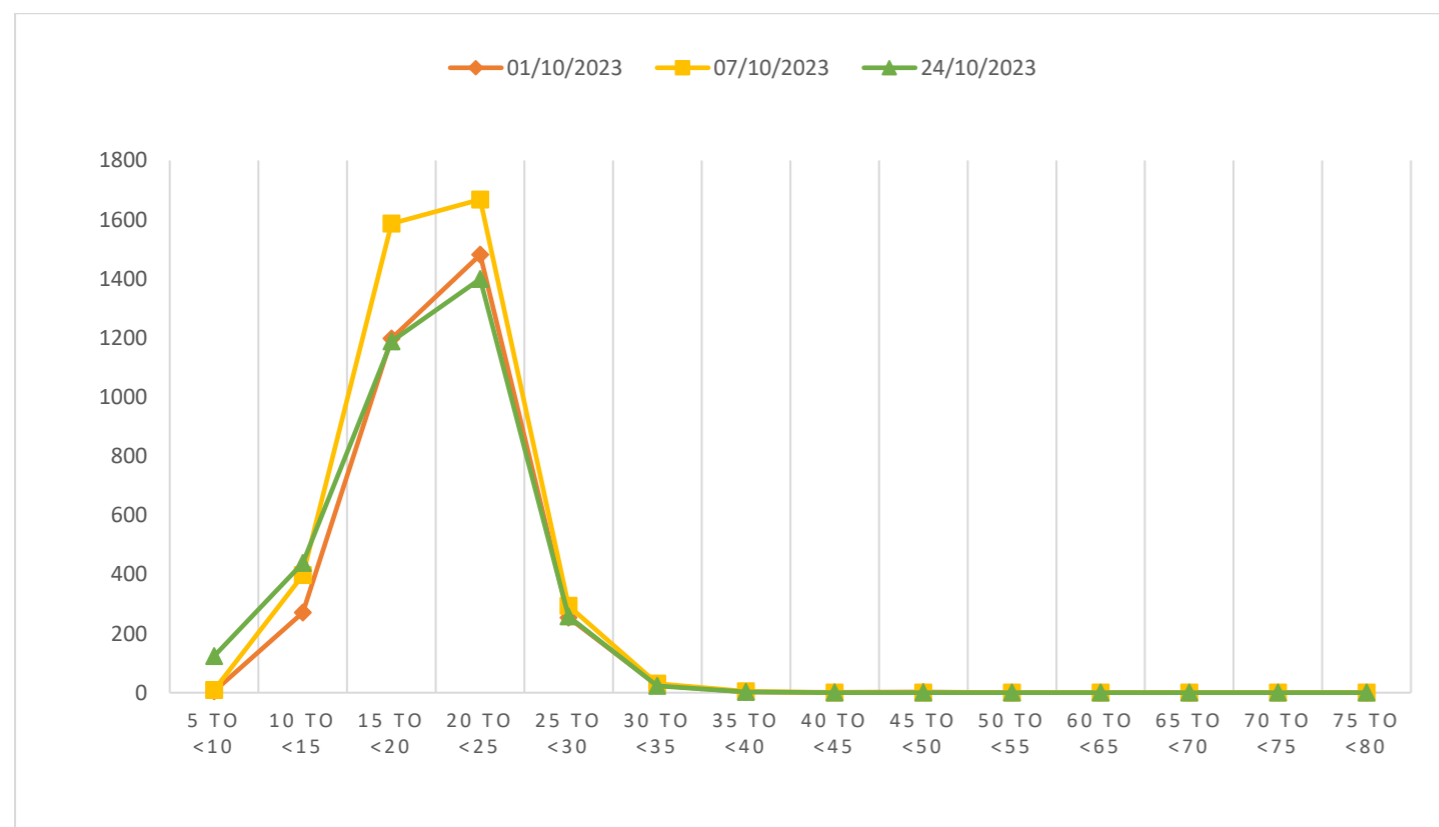
5 to < 10	10 to <15	15 to <20	20 to <25	25 to < 30	30 to <35	35 to <40	40 to <45	45 to <50	50to <55	55 to <60	60 to <65	65 to<70	70 to <75	75 to <80
5	271	1198	1481	254	25	2	1	2	0	0	0	0	0	0

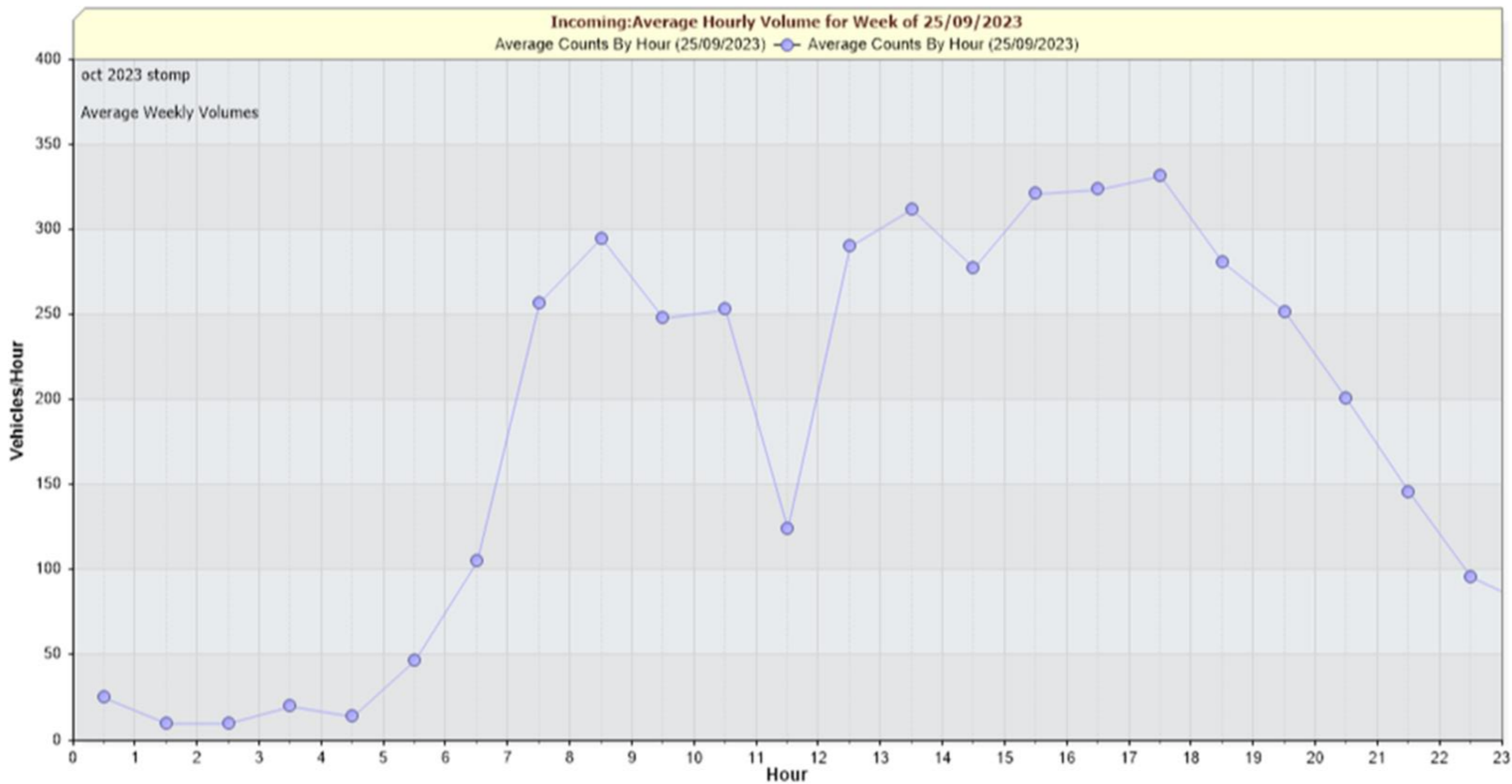
On Saturday 7th October 2023

5 to < 10	10 to <15	15 to <20	20 to <25	25 to < 30	30 to <35	35 to <40	40to <45	45 to< 50	50 to <55	55 to <60	60 to <65	65 to<70	70 to <75	75 to <80
9	398	1586	1668	294	31	5	0	0	0	0	0	0	0	0

On Tuesday 24th October 2023

5 to < 10	10 to <15	15 to <20	20 to <25	25 to < 30	30 to <35	35 to <40	45 to <45	45 to< 50	50 to <55	55 to <60	60 to <65	65 to<70	70 to <75	75 to <80
124	439	1188	1399	258	23	2	0	0	0	0	0	0	0	0





Glossary

<p><i>MVAS</i></p>	<ul style="list-style-type: none"> ➤ A Movable Vehicle Activated Sign (MVAS) is a road sign usually triggered by the speed of the vehicle ➤ The MVAS can be moved from site to site. ➤ The MVAS will flash a speed warning for vehicles exceeding the speed limit (30mph). ➤ It will also record data that can be used to monitor the volume of traffic during a particular period as well as on a daily basis. ➤ More importantly it will give us information on the speeding cars (the speed they are travelling and at what time of the day). ➤ MVAS have a short-lived effectiveness in reducing speeds, as unfortunately drivers become too familiar with them when they are situated in one particular location for long periods of time. ➤ They can be very effective when positioned near downhill gradients reminding drivers who may be inadvertently speeding.
<p><i>AADT</i></p>	<ul style="list-style-type: none"> ➤ Annual average daily traffic, abbreviated AADT and is a simple, but useful, measurement of how busy the road is. ➤ Traditionally, it is the total volume of vehicle traffic of a highway or road for a year divided by 365 days.
<p><i>85th Percentile Speed (mph)</i></p>	<ul style="list-style-type: none"> ➤ The 85th percentile speed is the speed at or below which 85 percent of the drivers travel on a road segment. ➤ Motorists travelling above the 85th percentile speed are considered to be exceeding the safe and reasonable speed for road and traffic conditions. ➤ The 85th percentile speed should be taken from speed data collected during a 24-hour weekday period. ➤ Typically, the data are collected with commercially available roadside units which sort and present the results in text as well as graphical format.